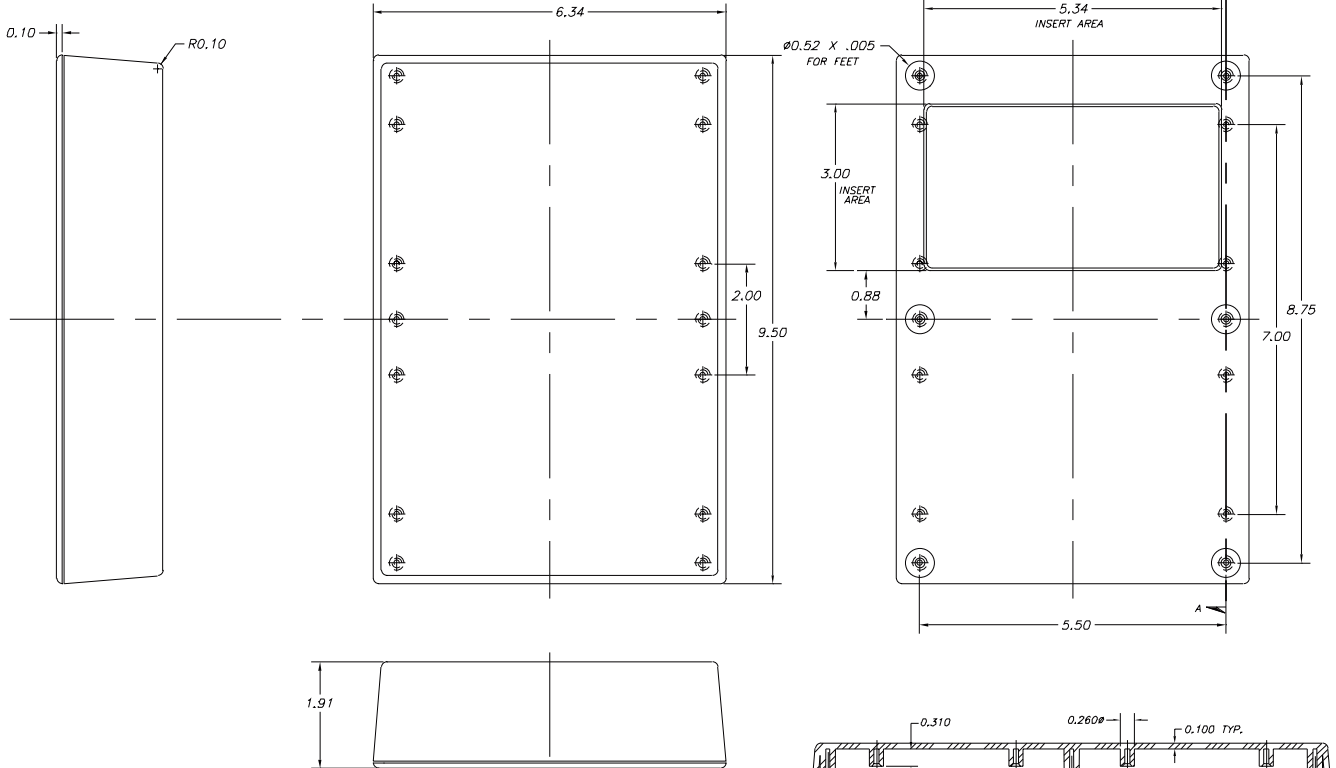


SERPAC 093

Electronics Enclosures

NOTES:
 1. WHEN MACHINE OR I PLATES MODIFICATIONS ARE REQUIRED,
 USE THE CENTER OF THE BOX TO DIMENSION.



8-17-98.

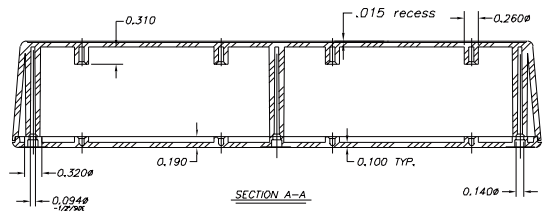
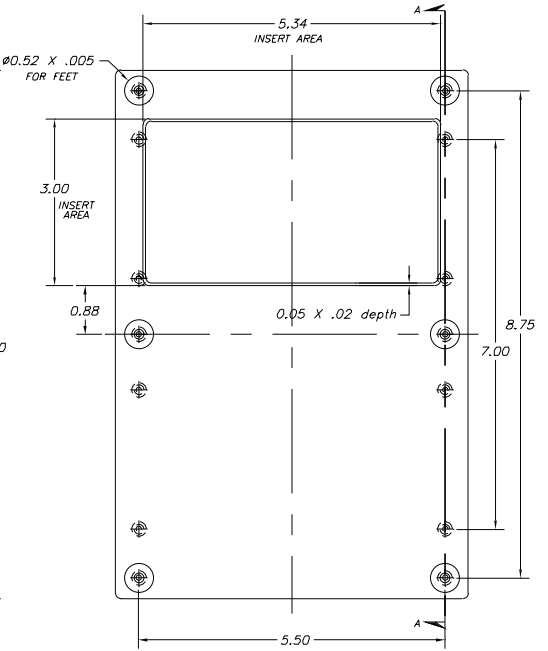
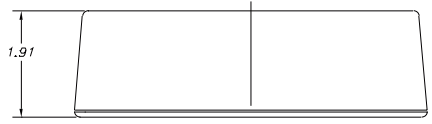
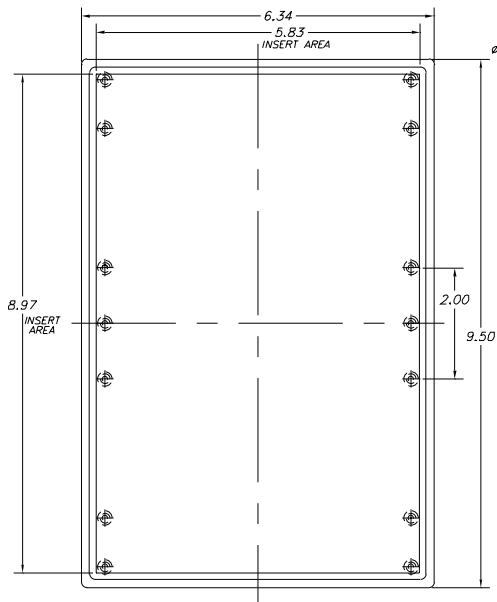
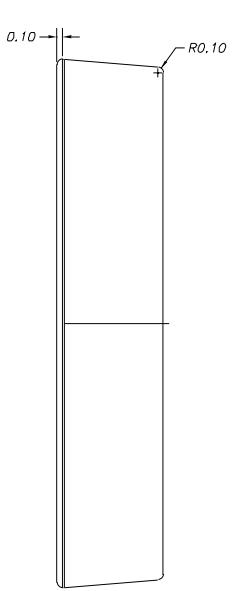
ALL DIMENSIONS $\pm .010$

ITEM	PART NO.	DESCRIPTION	ACCESSORIES	
1	93	PLASTIC TOP	PART NO. 51	DESCRIPTION FEET
2	09	PLASTIC BOTTOM		
3	6005	SCREWS (6)		

SERPAC 093-1

Electronics Enclosures

NOTES:
 1. WHEN MACHINE OR I PLATES MODIFICATIONS ARE REQUIRED, USE THE CENTER OF THE BOX TO DIMENSION.



8-17-98.

ALL DIMENSIONS ± .010

ITEM	PART NO.	DESCRIPTION	ACCESSORIES	
1	931	PLASTIC TOP	PART NO.	DESCRIPTION
2	09	PLASTIC BOTTOM	51	FEET
3	6005	SCREWS (6)		